



MENTAL HEALTH EUROPE – SANTE MENTALE EUROPE  
Rue de la Presse 4 1000 Brussels, Belgium  
+32 2 227 27 08  
E-Mail: [info@mhe-sme.org](mailto:info@mhe-sme.org)  
[www.mhe-sme.org](http://www.mhe-sme.org)

## MENTAL HEALTH EUROPE

### CALL FOR EXPERT

#### **Study: Value for money approaches in community mental health services**

Mental Health Europe is currently seeking an expert to support the carrying out of a study focussing on “Value for money approaches in community mental health services”.

**Candidates are invited to respond to this call by the 6<sup>th</sup> of November 2022** by sending their proposal to Francesca Centola at [francesca.centola@mhe-sme.org](mailto:francesca.centola@mhe-sme.org). Candidates can contact Ms Centola before submission for questions and clarifications.

**The selection will be completed by the 18<sup>th</sup> of November 2022 and the selected candidate should be ready to start the assignment no later than December the 1<sup>st</sup> and complete it by February the 15<sup>th</sup>.**

#### **I. About MHE**

Mental Health Europe (MHE) is the largest European independent network organisation representing mental health users, their families and carers, health professionals and service providers in over 30 countries across Europe. MHE has been working for over 35 years to promote positive mental health, prevent mental distress and advocate for social inclusion and the protection of the rights of persons with psychosocial disabilities. MHE subscribes to the psychosocial model of mental health, according to which mental ill-health is a human experience and is caused by a variety of factors including wider socio-economic and environmental issues (e.g., access to employment, education, living conditions, etc.).

MHE’s work is underlined and guided by key international and European frameworks such as the UN Convention on the Rights of Persons with Disabilities (UN CRPD)<sup>1</sup>, which reiterates that people with disabilities, including people with psychosocial disabilities, must fully enjoy their human rights. MHE advocates for de-institutionalisation and the provision of community-based mental health services that adhere to the human rights principles outlined in the CRPD – including the fundamental rights to equality, non-discrimination, full and effective participation and inclusion in society, and respect for people’s inherent dignity and individual autonomy.

---

<sup>1</sup> <https://www.ohchr.org/en/instruments-mechanisms/instruments/convention-rights-persons-disabilities>

## II. Background information

In its [Guidance on community mental health services: Promoting person-centred and rights-based approaches](#), WHO recognizes that, as mental health research has been dominated by the biomedical paradigm in recent decades, there is a **paucity of research** examining human rights-based approaches in mental health. A significant increase in investment is needed worldwide in studies examining rights-based approaches, **assessing comparative costs of service provision and evaluating their recovery outcomes** in comparison to biomedical-based approaches.

Against this backdrop, MHE is working on a study to **analyze “value for money” approaches in community mental health services**. We aim to assess the Economy, Efficiency, Effectiveness and Equity (Value for Money principles) of community mental health services. The objective is to gather evidence that can support the specific ‘economic’ argument for promoting community mental health services, thus supporting MHE’s broader policy and advocacy work towards de-institutionalization.

The final result of this exercise- which starts in 2022 and will end in 2023- will be a guide targeting the following audience: European Commission, staff overseeing relevant EU funds, national desk officers, MHE members, service providers. The guide will include a theoretical part (on value for money approaches in mental health community-based services), promising practices, as well as recommendations for key stakeholders.

### Definitions

Community mental health services include community mental health centres or teams, as well as peer support services, psychosocial rehabilitation programmes and supported living through small-scale residential facilities. Please refer to [World mental health report: Transforming mental health for all](#), in particular Figure 7.1 at page 195, part in blue (Annex I).

Value for money (VFM) is often expressed in terms of pursuing **economy** (careful management of available resources), **efficiency** (delivering the best level of service for less) and **effectiveness** (delivering the right service) to achieve desired outcomes and maximize the benefit of those outcomes. **Equity** is a cross-cutting principle to consider throughout a VFM analysis. It reflects the extent to which services are available to, and reach, the people they are intended for, and whether the benefits from the services are distributed fairly (more details [here](#)).

## III. Scope of assignment

### Overall task:

The expert is expected to carry out a literature review on the financial efficiency/return on investment of community mental health services and outline case studies showcasing good practices of community mental health services.

### Description of tasks:

- Carry out a systematic literature review on community mental health services, with a focus on value for money. The review may include studies on specific, sectoral approaches and programmes;
- Produce an overview of main research findings on the value for money of community mental health services. This overview will feed the theoretical part of the Guide

- Draft case studies, showcasing good practices community mental health services, by following a template to be agreed with MHE Secretariat (see Annex II) and including literature and resources provided by MHE Secretariat (members' input).

#### **IV. Budget and deliverables**

The maximum budget planned for this assignment is 6.500 € including VAT.

List of deliverables and timeframe:

1. By December the 20<sup>th</sup>: Draft Report outlining findings of literature review including bibliography (expert is to propose a structure for the report)
2. By January the 20<sup>th</sup>: Draft Outline of 6 case studies from Europe showcasing good practices of community mental health services according to value for money principles
3. By January the 31<sup>st</sup>: Final Report outlining findings of literature review addressing/integrating feedback provided by MHE on the Draft Report by the 17<sup>th</sup> of January
4. By February the 15<sup>th</sup>: Final Outline of 6 case studies addressing/integrating feedback provided by MHE on the Draft Outline by the 31<sup>st</sup> of January.

#### **V. Selection process**

In order to perform this assignment according to expectations the expert must have:

- Proven expertise in carrying out research in the field of value for money in the sector of mental health;
- A highly methodological approach and excellent writing skills
- Fluency in English (written and spoken).

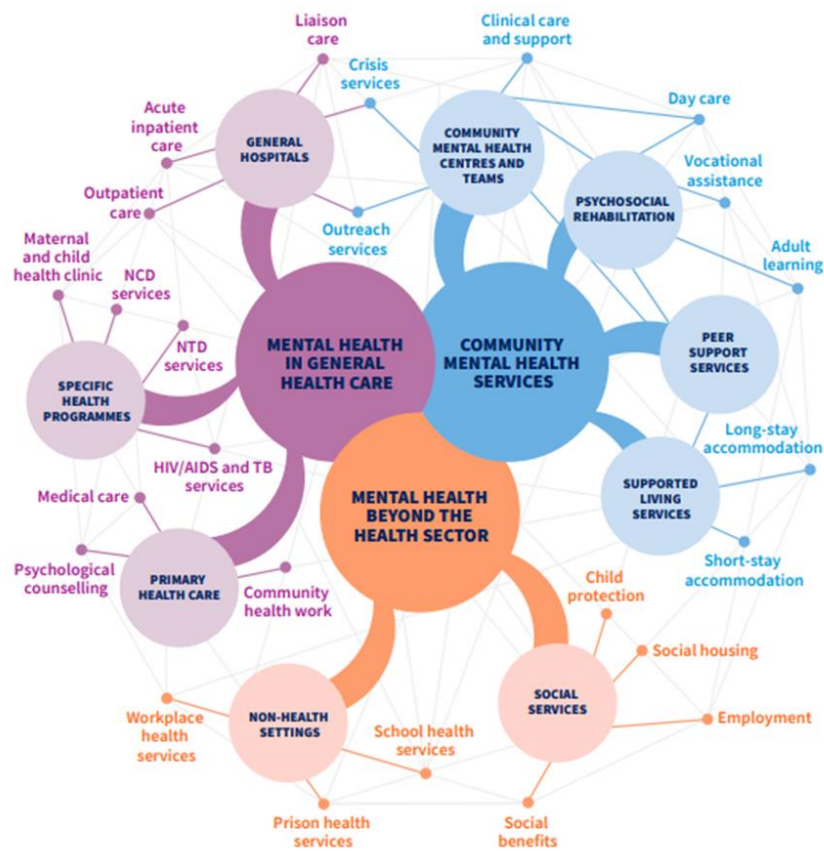
To respond to this call, applicants shall submit:

1. A CV describing expertise and experience in carrying out similar assignments
2. An outline of their approach to this assignment (maximum 1 page)
3. Financial proposition, which should include number of days of work, daily rate and VAT (if applicable).

## Annex I

FIG. 7.1

**Model network of community-based mental health services**



Source: [World mental health report: Transforming mental health for all](#), WHO

Annex II: Tentative template for case studies

<b>Description of the service</b>	
<b>Objectives</b>	
<b>Core principles and values underlying the service</b>	
<b>Challenges and overcoming strategies</b>	
<b>Service evaluation (outcomes, with a focus on cost effectiveness)</b>	
<b>Transferability</b>	
<b>Additional info</b>	
<b>Links</b>	